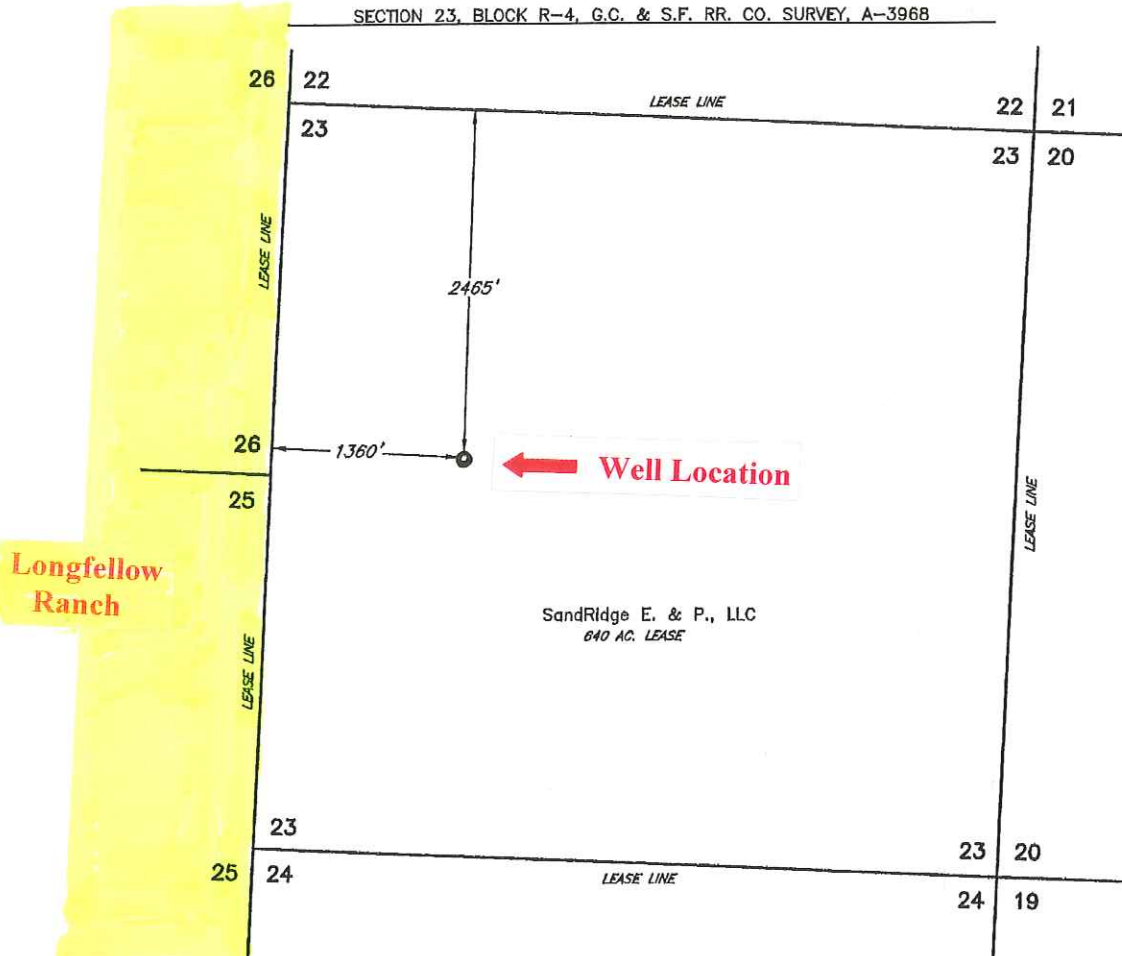


PECOS County, Texas

SL Description 2465' FNL & 1360' FWL

BH Description

SECTION 23, BLOCK R-4, G.C. & S.F. RR. CO. SURVEY, A-3968



Operator SandRidge EXPLORATION & PRODUCTION, LLC

Lease Name & Well No. LONGFELLOW KING 9 #2301

Note: For survey construction, corner descriptions and records references, see supporting documents in file.

Ground Elev. 3624' Alternate Location NONE

Coordinates NAD 27 TSC ZONE X = 855075 Y = 877461 LAT.: N 30.19778 LONG.: W 102.62461

Topography & Vegetation NATURAL PASTURE

Best Accessibility to Location FROM RANCH ROAD ±2300' SOUTHEAST OF LOCATION

Distance & Direction ±47 MILES SOUTHEAST OF FORT STOCKTON

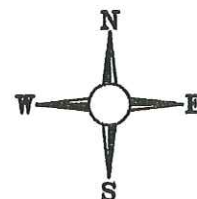


The above sketch represents the location as staked on the ground and is for permit purposes only.

This the 2nd day of December, 2009

*Jeffrey D. Suiter*

Registered Professional Land Surveyor No. 4650



Scale: 1" = 1000'

Job # 09206